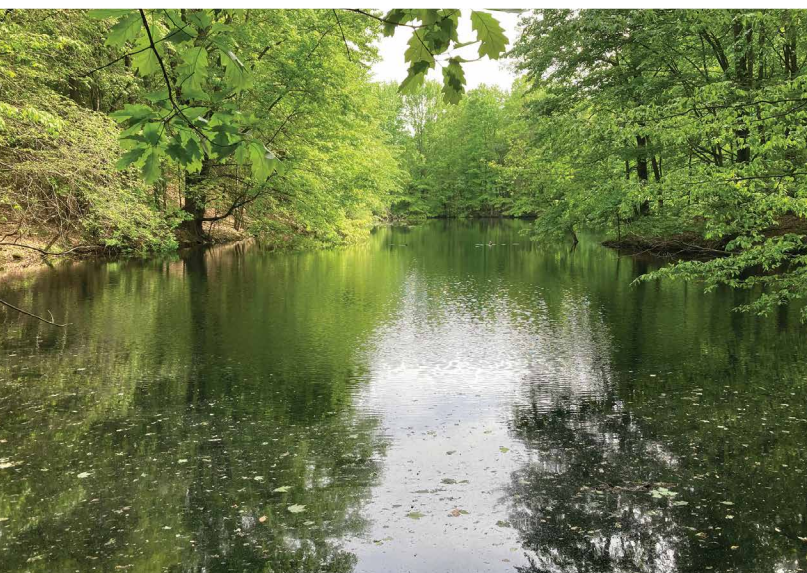


# ABSOLUTE AUCTION

TUESDAY, AUGUST 5, 2025, 5:30 PM



LAND



## LIVE ONSITE WITH ONLINE BIDDING AVAILABLE

### AUCTION HIGHLIGHTS

- Mostly Wooded With Two Ponds
- Wildlife
- Pine Trees
- Gas & Oil Rights
- Green Twp.
- Mahoning Co.
- South Range Schools
- Sells As Unit

### REAL ESTATE

35.9 acres, mostly all wooded with pine trees. Two ponds, gas well road for access. Loads of nature and wildlife. Mineral rights transfer. Walk the land at your convenience.

### TERMS ON REAL ESTATE

10% down auction day, balance due at closing. A 10% buyer's premium will be added to the highest bid to establish the purchase price. Any desired inspections must be made prior to bidding. All information contained herein was derived from sources believed to be correct. Information is believed to be accurate but not guaranteed.

## GERALDINE C. ROLLER TRUST

## 35.9 ACRES

W. MIDDLETOWN RD.,  
CANFIELD, OH 44406

[www.kikoauctions.com](http://www.kikoauctions.com) | 800.533.5456

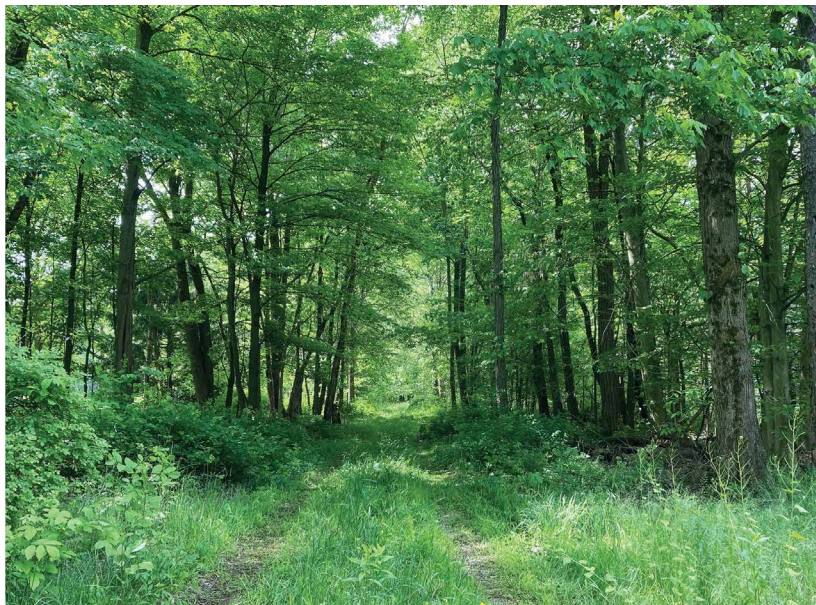
Information is believed to be  
accurate but not guaranteed.  
KIKO Auctioneers



Scan for auction  
details, including  
directions.

*Absolute Auction.  
All sells to the  
highest bidders  
on location.*





All measurements are approx. & subject to survey



RANDALL L. KIKO  
AUCTIONEER/REALTOR  
330.831.0174  
randallkiko@kikocompany.com



REALTORS  
AUCTIONEERS  
ADVISORS

Information is believed to be  
accurate but not guaranteed.  
KIKO Auctioneers

